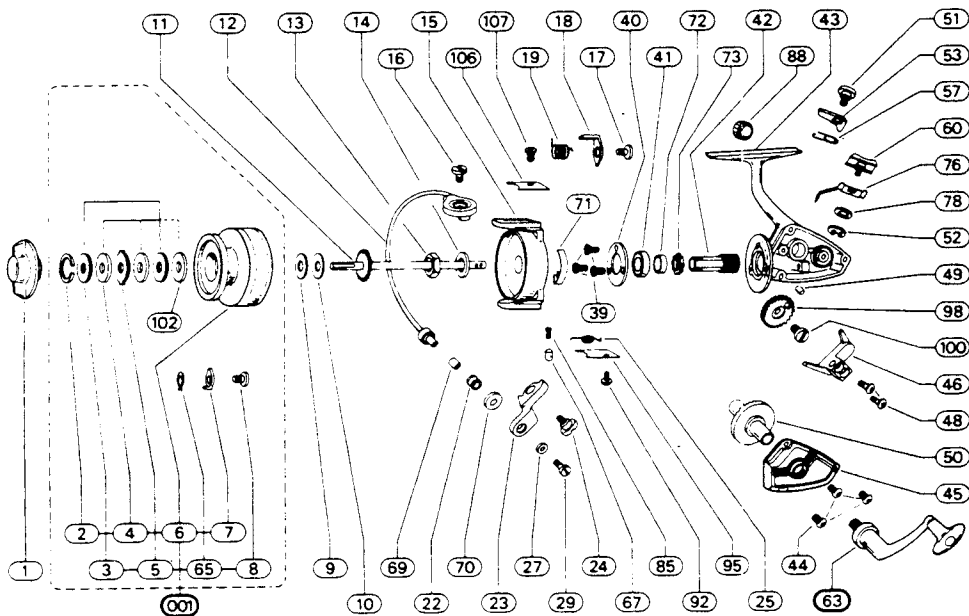


2200-080



*Old Model*

REF. NO.	PART NO.	DESCRIPTION	REF. NO.	PART NO.	DESCRIPTION
001	79-66-0078-01	Spool Assy.	44	79-58-0154-01	Cover Screw
1	79-40-0063-01	Drag Nut	45	79-47-0105-01	Cover Plate
2	79-54-0004-01	Retainer Ring	46	79-75-0022-01	Level Wind Yoke
3	79-72-0018-01	Drag Washer (Metal)	48	79-58-0014-01	Yoke Screw
4	79-72-0016-01	Drag Washer (Fiber)	49	79-57-0013-01	Level Wind Roller
5	79-72-0014-01	Drag Washer (Eared)	50	79-28-0044-01	Drive Gear
7	79-43-0005-01	Click Pawl	51	79-58-0012-01	N-R Pawl Screw
8	79-58-0001-01	Click Pawl Screw	52	79-54-0002-01	N-R Button Retainer
9	79-72-0223-01	Rear Washer	53	79-43-0024-01	N-R Pawl
10	79-72-0223-01	Rear Washer	57	79-67-0008-01	N-R Pawl Spring
11	79-60-0042-01	Main Shaft	60	79-10-0021-01	N-R Button
12	79-03-0037-01	Bail Wire Assy.	63	79-20-0061-01	Crank Assy.
13	79-40-0007-01	Pickup Nut	65	79-67-0009-01	Click Spring
14	79-72-0232-01	Pickup Washer	67	79-00-0002-01	Bail Stop
15	N/A	Pickup Housing	69	79-63-0002-01	Roller Sleeve
16	79-58-0152-01	Bail Screw	70	79-21-0003-01	Roller Cup
17	79-58-0063-01	Trip Lever Screw	71	79-08-0008-01	Bail Brake
18	79-37-0041-01	Trip Lever	72	79-63-0019-01	Sleeve
19	79-67-0040-01	Trip Lever Spring	73	79-50-0017-01	Ratchet
22	79-57-0002-01	Line Roller	76	79-02-0010-01	Throwout Arm
23	79-07-0026-01	Bail Bracket	85	79-67-0004-01	Bail Stop Spring
24	79-58-0152-01	Bail Bracket Screw	88	79-12-0010-01	Crank Cap
25	79-67-0036-01	Bail Spring	92	79-58-0153-01	Bail Spring Plate Screw
27	79-72-0161-01	Roller Lock Washer	95	79-47-0106-01	Bail Spring Plate
29	79-58-0053-01	Roller Screw	98	79-28-0045-01	Gear
39	79-58-0032-01	Bearing Retainer Screw	100	79-58-0072-01	Gear Screw
40	79-53-0031-01	Bearing Retainer	102	79-72-0020-01	Drag Washer
41	79-04-0028-01	Ball Bearing	106	79-47-0107-01	Trip Lever Plate
42	79-46-0033-01	Pinion	107	79-58-0143-01	Trip Lever Plate Screw
43	N/A	Frame Assv.			